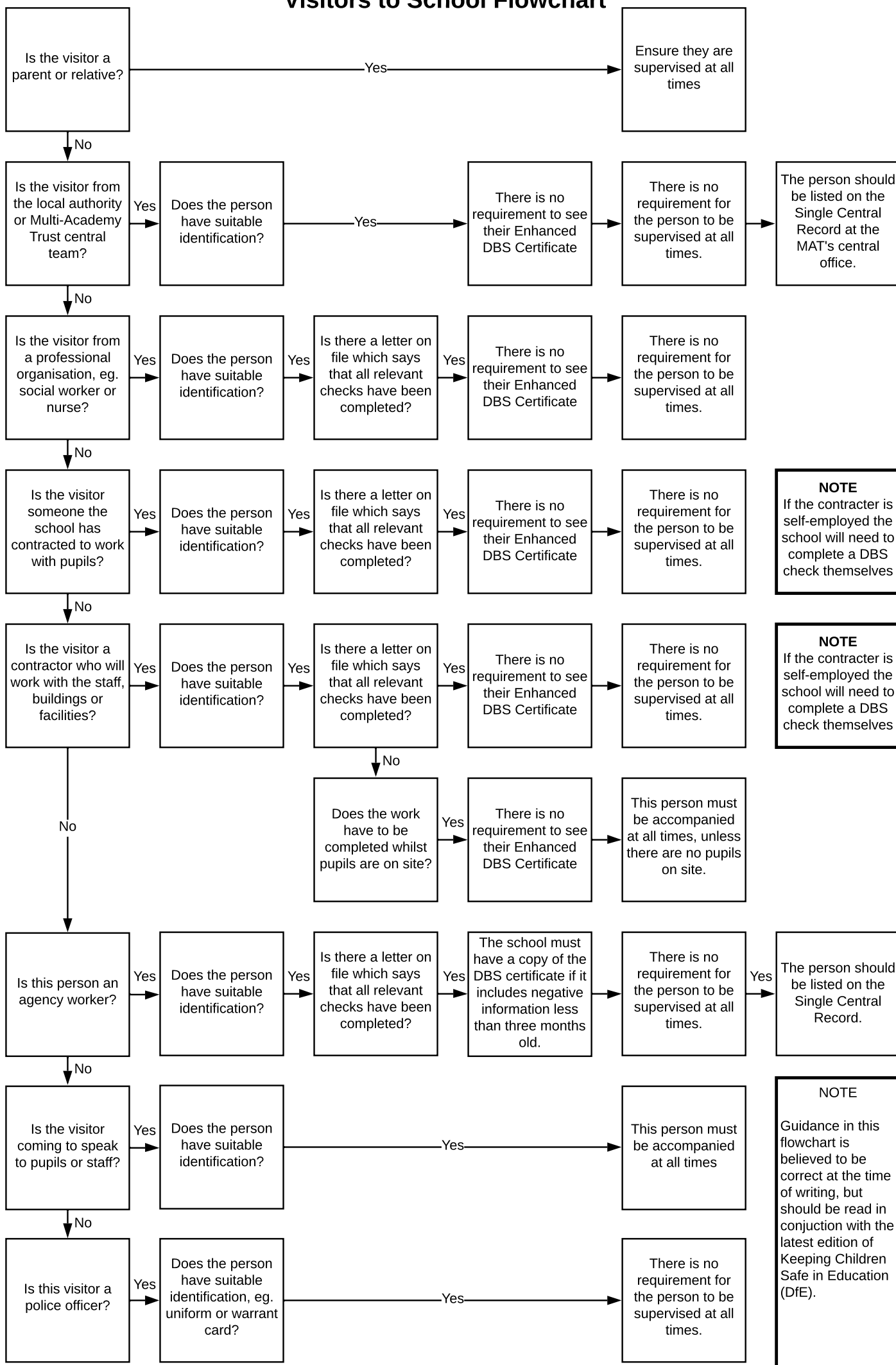


Visitors to School Flowchart



NOTE
If the contractor is self-employed the school will need to complete a DBS check themselves

NOTE
If the contractor is self-employed the school will need to complete a DBS check themselves

NOTE
Guidance in this flowchart is believed to be correct at the time of writing, but should be read in conjunction with the latest edition of Keeping Children Safe in Education (DfE).